

29 January 2007

SeaSonde® Current Maps Powered by Google™

New visualization tool keeps pace with Internet!

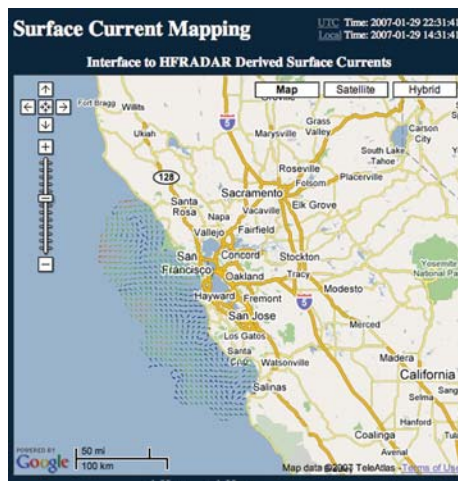
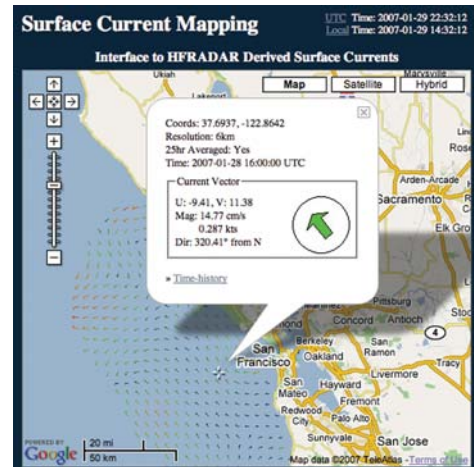
Many SeaSonde HF radar networks provide data beneficial for a host of applications important to government, private industry and individuals. With a wide variety of end-users it is critical yet often difficult to output products that contain a high degree of information and are easily interpreted by general public. Capitalizing upon the latest Internet technology, SeaSonde operators along the U.S. coasts have developed and implemented a surface current map web interface powered by Google.

There are approximately 17 participating institutions sharing their data from 72 SeaSondes through this service. Visitors at these sites can zoom in and out of regional networks along the coasts and choose among several data schemes. For example, displayed current maps averaged with either a longer or shorter time period can be selected. Another useful feature is activated when moving the cursor onto an individual vector, prompting a pop-up containing more specific information on that datum. Those needing actual data files for incorporation into forecast models or longer term analyses can download from archives posted at most of the participating host institutions.

Two institutions hosting Google interfaces can be visited at:

<http://www.cencoos.org/hfrnet/>
<http://www.sccoos.org/data/hfrnet/>

Examples of Google-powered web interface hosted on the Southern California Ocean Observing System (SCCOOS) web site are shown here.



1914 Plymouth Street
Mountain View, CA 94043 USA
Phone: +1 (408) 773-8240
Fax: +1 (408) 773-0514
E-mail: info@codar.com
www.codar.com